



**Product Name:** MELAMINE 100 UG/ML IN WATER  
(Isotopic Label & Enrichment Specification) (13C3, 99%; AMINO-15N3, 98%)

**Lot Number:** SDFD-017

**Catalog Number:** CNLM-8150-S

### Product Information

Chemical Purity Specification:  $\geq 98\%$   
Labeled CAS Number: NA  
Unlabeled CAS Number: 108-78-1  
MW\*: 132.08  
Chemical Formula: \*C3H6\*N3N3  
Storage: Store at room temperature away from light and moisture.  
Stability: See storage and expiration date.

### Certification

Cambridge Isotope Laboratories, Inc. guarantees that this material meets or exceeds the specifications stated. Absolute identity as well as chemical and isotopic purities are assured by the use of unambiguous synthetic routes and multiple chemical analyses whenever possible. Results are representative of QC testing at time of release from Quality Control unless otherwise stated.

Volumetric measurements were made with Class A glassware. Gravimetry is traceable to the NIST through calibrated balances and certified, calibrated, standard weights. The calibrations are traceable to the NIST under Test No. 822/270236-04. The calibrations also meet specifications outlined in ISO 9001, ISO/IEC 17025, ANSI/NSCL Z540-1-1994, NCR Document 10CFR50 Appendix B, and applicable subdocuments.

This COA references the bulk catalog number before packaging. The COA also applies to the CIL finished good catalog number. Some possible packaging sizes and their corresponding suffix are -1.2, -1, -0.5, -10, or -0.1.

\* For isotopically labeled compounds, MW listed is for the fully enriched product.

Approved by: Sashi Sivendran-Basak

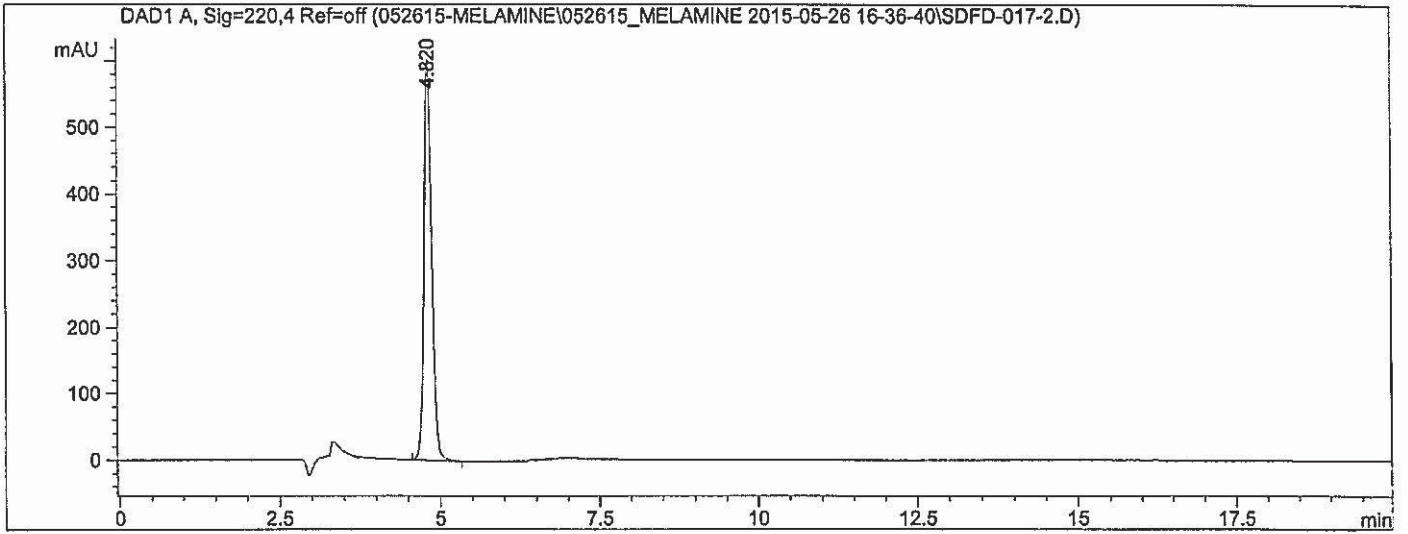
Sashi Sivendran-Basak, Ph.D., Quality Review

### Quality Control Tests and Results

QC Release Date	5/27/2015
Expiration Date	5/27/2025
Concentration Based on Gravimetry	99.9 $\mu\text{g/mL}$
Chemical Purity of Neat Material(s)	100.0%
HPLC for Concentration	97.6 $\pm$ 1.1 $\mu\text{g/mL}$ (k=2)

CIL subscribes to the following standards for different products: ISO Guide 34, ISO/IEC 17025, ISO 13485 and cGMP as appropriate.

```
=====
Acq. Operator   : EUP-092 /SYQ                      Seq. Line :   11
Acq. Instrument : Instrument 1                      Location  : Vial 22
Injection Date  : 5/26/2015 8:16:50 PM             Inj       :    1
                                                    Inj Volume: 10.0 µl
Acq. Method     : C:\CHEM32\1\DATA\052615-MELAMINE\052615_MELAMINE_2015-05-26 16-36-40\
                PUMPB_UV@220.M
Last changed    : 5/26/2015 4:25:44 PM by EUP-092 /SYQ
Analysis Method : C:\CHEM32\1\METHODS\PUMPB_UV@220.M
Last changed    : 5/27/2015 9:09:32 AM by EUP-092 /SYQ
                (modified after loading)
Sample Info     : Melamine 13C3 15N3 CNLM-8150-S SDFD-017 100ug/ml in H2O
=====
```



=====  
Area Percent Report  
=====

Sorted By : Signal  
Multiplier: : 1.0000  
Dilution: : 1.0000  
Use Multiplier & Dilution Factor with ISTDs

Signal 1: DAD1 A, Sig=220,4 Ref=off

Peak #	RetTime [min]	Type	Width [min]	Area [mAU*s]	Height [mAU]	Area %
1	4.820	BB	0.1262	4973.35596	602.92004	100.0000
Totals :				4973.35596	602.92004	

=====  
\*\*\* End of Report \*\*\*